

Do not scale from this drawing, work to given dimensions. All dimensions to be checked on site. Any discrepancies with this drawing to be reported and clarified prior to commencing work on site, if in doubt - Ask. Corporate Architecture Ltd accept no responsibility for works not undertaken fully in accordance with this drawing and relevant specifications. Copyright © Corporate Architecture Limited

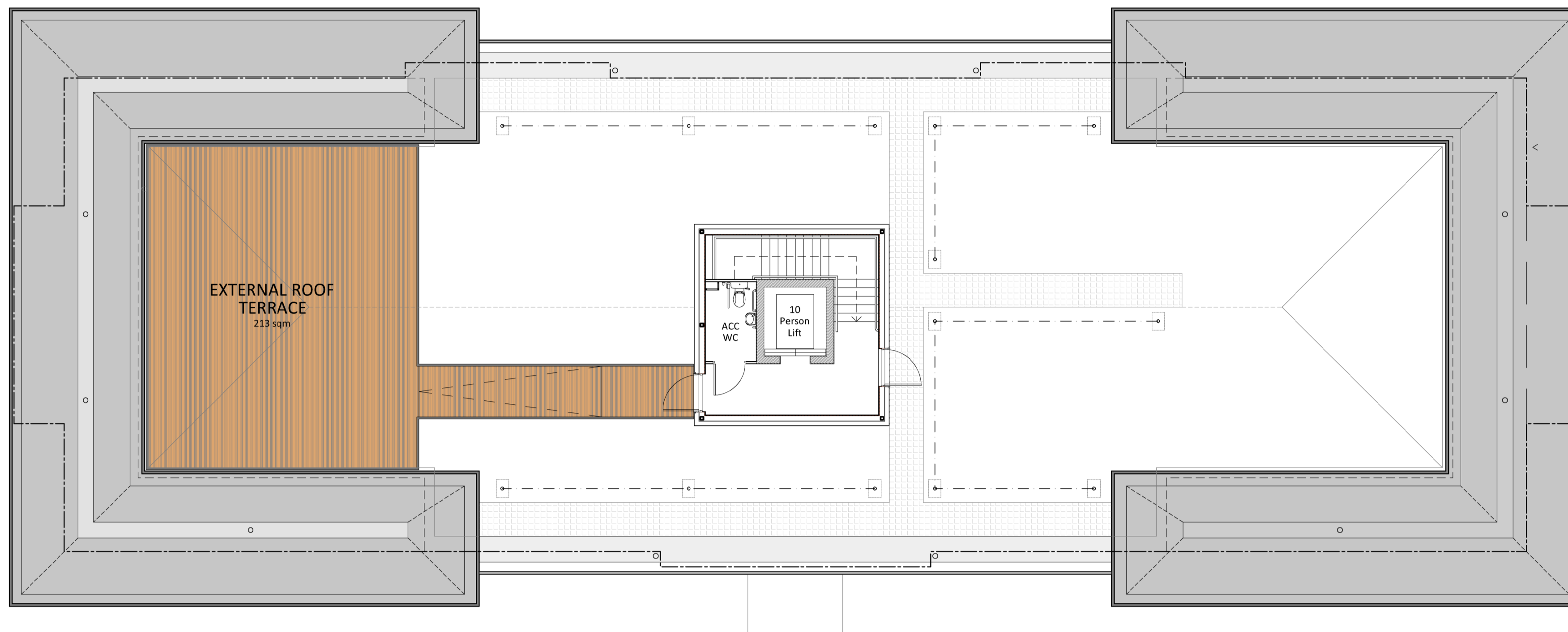
North point:

Notes:

SCHEDULE OF AREAS

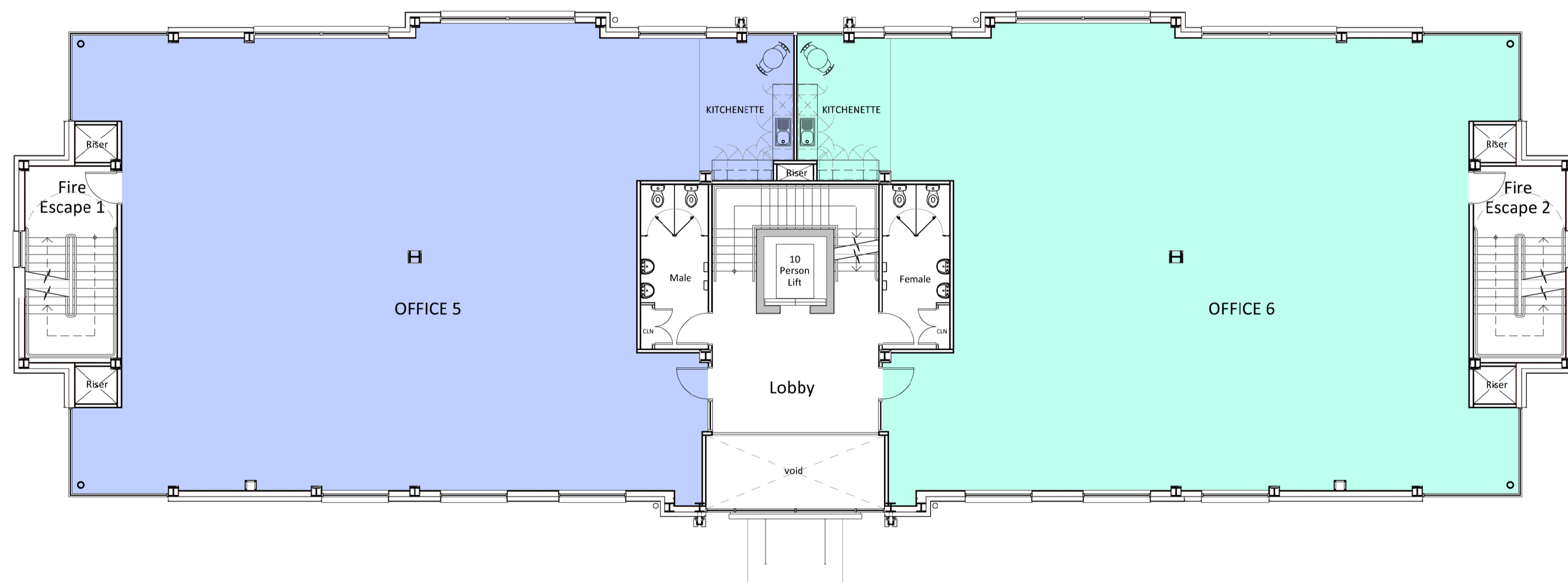
NETT LETTABLE OFFICE AREAS;

OFFICE 1	223m ² / 2,400ft ²
OFFICE 2	239m ² / 2,572ft ²
OFFICE 3	240m ² / 2,583ft ²
OFFICE 4	240m ² / 2,583ft ²
OFFICE 5	240m ² / 2,583ft ²
OFFICE 6	240m ² / 2,583ft ²
TOTAL	1,422m² / 15,306ft²



Proposed Third Floor Plan

1:100



Proposed Second Floor Plan

1:100

Revision Log:

Rev:	Description:	By:	Date:
------	--------------	-----	-------

Project:
Development 6
Peaker Park
Rockingham Road
Market Harborough

Client:
Prime Life Developments

Scale:
0 1m 2m 3m 4m 5m 1:100

Drawn by: SO	Checked: RC	Date: Nov 2020	Paper Size: A1
-----------------	----------------	-------------------	-------------------

Drawing Title:
Proposed Second & Third Floor Plan

Drawing Status:
FOR DISCUSSION

Drawing Number: 4282/PL/19/SK002	Revision Number: #
-------------------------------------	-----------------------



CORPORATE ARCHITECTURE LIMITED
CHARTERED ARCHITECTS

HEAD OFFICE
Venari House, 1 Tembush Way,
Market Harborough,
Leicestershire, LE15 7XV
Tel: 01858 467476

ISO 9001 office@corporatearchitecture.co.uk www.corporatearchitecture.co.uk

RIBA Chartered Practice